

**INVERCARGILL
PUBLIC | ART
GALLERY**

AGM

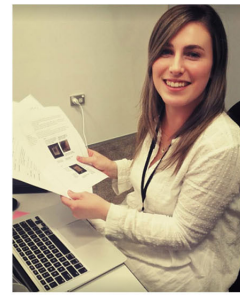
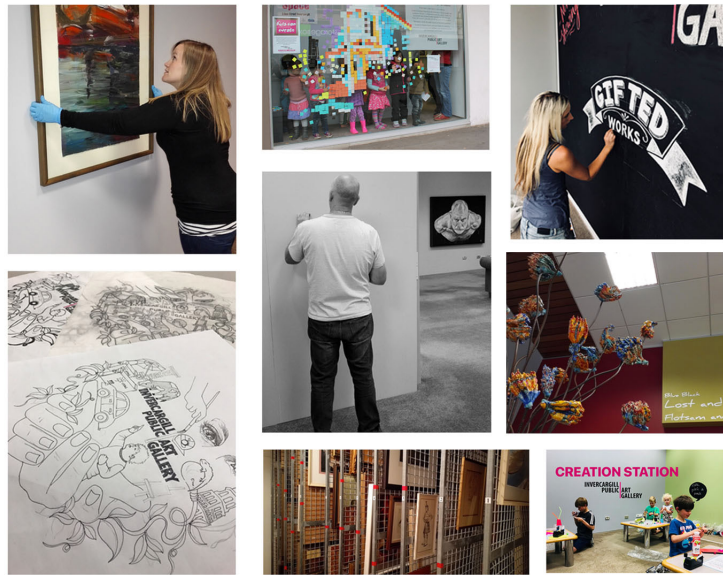
ANNUAL GENERAL MEETING

THURSDAY 14 JUNE 2018 | 7.00PM

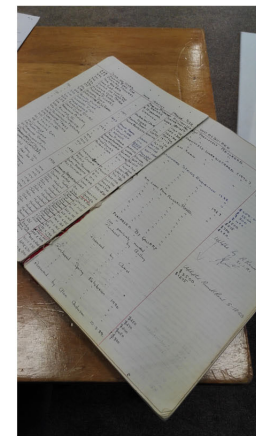
5 DON STREET, INVERCARGILL

ANNUAL REPORT

JOIN US FOR A BEHIND THE SCENES
PRESENTATION AND TOUR WITH IPAG STAFF



embrace what art can be



President's Report

This has been a very busy and successful year for the Invercargill Public Art Gallery and we must congratulate our Manager/Curator Sarah Brown for leading a good deal of the work with her team. All of our staff have demonstrated an impressive level of dedication and professionalism that has served us well. The gallery's website blog is an excellent source of information regarding Loren's collection work and Gemma's design skills have ensured a high level of presentation in the public arena. Peter, Chris and Ash also deserve mention for their willingness to support the gallery in a multitude of ways when needed.

Despite our temporary situation our gallery has even been receiving national attention through our exhibitions and collaborations. Sarah's ability to engage experts when necessary and collaborate with numerous organisations has been a key element for our current success.

We are grateful for the support of Lisa Tau-McNaughton of Arts Murihiku and Angela Newell of Venture Southland, it has been useful to be part of larger art events and have others promote us and share our goals. Our collaborations with the Southland Museum and Art Gallery, the Southland Arts Society, the Eastern Southland Gallery and the Southland Arts Foundation have demonstrated that the arts sector is now a unified and collegial one.

We can fully empathise with SMAG staff as they deal with the closure of their own building and the uncertainty that creates. However, a crisis can also create opportunities and there is now much more public interest in investing in solutions than existed before and potentially more Government support. The Prime Minister's public commitments for investing in the arts and greater community engagement means that the proposed art centre will tick numerous funding boxes.

The White Night evening demonstrated the local interest in art when we had crowds of people enthusiastically passing through our two galleries over the course of a few hours. I was also gratified to note that there were more than twice as many Long-Term Plan submissions supporting the proposed art centre than opposing. Many of the supporting submitters represented organisations with large memberships. While there has been a lot of public disappointment over the closure of the Southland Museum and Art Gallery it is clear that there is now a lot of public support for actively investing in arts and heritage.

With the resignation of Dame Catherine Tizard as our patron we were grateful that Michael Deaker accepted this role. Michael has held numerous leadership roles in education and local government and is nationally respected media commentator. His strong family and personal connections to our gallery make him a knowledgeable and "hands on" patron. He takes a keen interest in all that we do and is always available for wise counsel.

Our gallery Board has been focussed on delivering our strategic plan and ensuring our staff are supported in this work. Lindsay Abbott and Lesley Soper, as ex-officio councillor members, have ensured good communication between the Council and our gallery and provide useful advice.

We have a number of work-streams with subcommittees and have made some good progress in all.

Finances

The ICC continues to provide the bulk of our operational costs through an annual grant and we are grateful for support from the Community Trust of Southland, The Southland Regional Heritage Fund, the Invercargill Licensing Trust and a generous bequest from Elizabeth Clarkson. This support has helped cover our shifting costs, cataloguing, rent and adding to our collection.

Bernard Mathews continues to present detailed monthly reports and ensure that we operate within our tight budgets.

Membership

Our membership committee have revamped our membership form and are developing some new membership packages and events. After our membership numbers stagnated after the closure of Anderson House, we are experiencing an upsurge of new memberships.

Public Relations and Communications

We have an effective social media presence and we are working on updating our website to make sure it is smart phone compatible and generally fit for purpose as technology use changes. We have developed positive relationships with key fund holders and have connected with numerous community groups with presentations, informal meetings and opening the gallery for evening events.

Developing closer relationships with schools and other education providers has also been a priority.

We ran a special membership meeting to provide information on the Art Centre proposal and our gallery's situation.

Human Resources

Noreen Melvin has done a lot of work in ensuring our appraisal process is fit for purpose and meets the needs of our staff and board. It is essential that we are all working towards our strategic goals and staff feel valued and supported. It has been a learning journey for both board and staff but has been a very valuable exercise. We are really sorry to lose Noreen with her shift to Nelson, her professional expertise and art sector knowledge will be difficult to replace.

Policies, Processes and Compliance

Board and staff representatives attended a useful seminar on ethics in the Museum and Art Gallery Sector and we continue to develop our management systems based on best practice for shifting and storing the collection. Keeping abreast of health and safety responsibilities and ensuring we have appropriate documentation is ongoing work. We have almost ratified an MOU with the Invercargill City Library and Archives that will ensure the art stored in there has some operational agreements for the shared space.

Property

Our temporary homes have served us well and 5 and 11 Don Street have proven to be very useful exhibition spaces. The old Nudax space has provided useful storage and processing facilities. None of these are permanent and we have approximately to the end of the year before the ILT hotel development puts an end to our tenure. We are currently looking for alternative spaces and would be grateful for any ideas or possibilities. Given the fact it will still be several years before the Art Centre is completed we would like to find somewhere that will serve us until then. We do require a climate-controlled environment for our collection.

This is the end of my three-year term as president and I have really appreciated the support of our current board. We have worked as a united team with a useful breadth of knowledge, energy and expertise. Our board meetings have become inspiring and productive as we see good progress being made and new possibilities appear. This is an exciting and pivotal time for the arts in Invercargill and being involved with the Invercargill Public Art Gallery is a great way to have an influential part in the art journey for our community.

Dave Kennedy
President
Invercargill Public Art Gallery

Manager's Report

Last year, I began my report by reflecting on the major period of change and growth that IPAG had gone through during the 2016/2017 year. Now, a further twelve months down the track, I am pleased to say that we were just getting started.

We kicked off the 2017/2018 year armed with our strategic plan and high aspirations, but it became very apparent that achieving these relied on expanding our operational capacity. We began by hiring Gemma Baldock in the role of Assistant Curator/Administrator. Gemma came to us with a Fine Arts degree from the Dunedin School of Art, and hands-on experience from her role as Public Programmes Manager at City Gallery Invercargill.

The development of our *Collection Relocation and Transition Project* highlighted the need for an additional staff member. Thanks to funding from the Community Trust of Southland, we were able to appoint Loren Baxter, a recent graduate of the Museum and Heritage Studies course at Victoria University, to the role of Assistant Project Registrar.

With a core team of three, as well as our gallery attendants Chris Kiddey and Ash, and our caretaker Peter Crawford, I felt we were now equipped to lead the gallery into a new era and meet our strategic goals.

We began by working on one of our key aspirations for the year, a growth in public engagement. Although we hold regularly changing exhibitions - nine so far this year - we had noticed a growing need within the community for art experiences that went beyond just 'seeing'. As illustrated in the recent concept for the confirmed Art + Creativity Invercargill (ACI), people were yearning for an opportunity to interact, engage, and in many cases, be part of the artistic process.

In response, we developed our *Creation Station*, where youngsters and adults alike could glean inspiration from a current exhibition and create their own art works. Once we began this process, the positive vibe and desire for more was contagious. The knitted skeletons in our recent exhibition, *Michele Beevors: Anatomy Lessons 2005-2018*, provided the catalyst for a real community event, with a workshop that ran the entire course of the show. Over three weeks members of the public dropped in a huge amount of knitted squares to create a communal knitted moa for eventual display around Invercargill.

At an institutional level we grew our understanding that public engagement isn't just about the public engaging with art works, but rather it is also about us as an entity engaging with the public. To this end, we hosted exhibitions for the Southland Art Foundation, Sunrise Rotary and the Southland Photographic Society, all of which have been successful community exercises and attracted new audiences through our doors. We have also gone outside our walls and engaged with groups like U3A, MakerVengers, Enrich and local art groups, as well as strengthened links with our GLAM sector colleagues across Southland.

Our second aspiration for the 2017/2018 year was the implementation of our *Collection Relocation and Transition Project*. I am pleased to report that this has seen great

progression, with Loren recently completing the transferal of our base collection records onto Ehive, and 45% of our collection being shifted from Anderson House to 5 Don Street. Many of these are works on paper, which will be unframed, cleaned and checked for pests before their future storage location is determined. Our racking system is currently being installed into the Invercargill City Library and Archives, thanks to help from Paul Horner, and our staff have been packing and crating the remaining artworks to ensure they are safe for transportation once their new home is ready to receive them, hopefully by end of July this year.

During this process we have called on industry experts to inform our decisions and I would like to thank Marion Mertens (Paper Conservator), Nyssa Mildwaters (Otago Museum Conservation Manager), Jo Massey (Roving Museum Officer), Kimberley Stephenson (SMAG), Jim and Marcella Geddes (Eastern Southland Gallery) and Stephen Davies for their invaluable advice.

It is clear that IPAG has achieved so much over the last year. This has largely been made possible through the hard work and dedication of the team of people I have the privilege of leading. The staff at IPAG deserve a huge thank you, as they work tirelessly to make the Invercargill arts scene exciting and engaging whilst also preserving our valuable collection for future generations. A special thank you must also go to IPAG's proactive and energetic board, led by Dave Kennedy. Dave is stepping down from the presidency after a three-year term that has seen an unprecedented level of challenges and triumphs. As a member of the IPAG board since 1984, Dave has immense institutional knowledge and we are thrilled he is keen to continue as a valuable member of the IPAG board.

As we look ahead to the coming year, we are filled with excitement. Our lease at both 5 Don Street and our recently opened second pop up gallery at 11 Don Street have been extended until December 2018, and we have some amazing ideas in the pipeline to utilise both these venues. Our excitement is however tempered with an air of uncertainty. The construction of the new ILT Hotel on this site means that our time here must come to an end. Although the question of 'where to then?' awaits an answer, it appears that the closure of the iconic pyramid that houses the Southland Museum and Art Gallery and the recently confirmed plans for the ACI has placed the city on the cusp of a long overdue cultural renaissance. To achieve this, we need an openness to change and the combined effort of all in the sector. I believe IPAG has an enormous role to play in this and I look forward to seeing Invercargill's cultural landscape in twelve months' time.

Sarah Brown
Manager / Curator
Invercargill Public Art Gallery

INVERCARGILL PUBLIC ART GALLERY INC. BOARD MEMBERS 2017 - 2018

PRESIDENT	Mr David Kennedy
SECRETARY	Mrs Sharon Ayto
TREASURER	Mr Bernard Mathews
BOARD	Mr Mick Hesselin
	Mr Graham Fletcher
	Mrs Barbara Wilson
	Mrs Noreen Melvin
	Mrs Lynley Irvine
ICC REPRESENTATIVES	Miss Lousie Evans
	Cr Lindsay Abbott
	Cr Lesley Soper

Embrace what art can be ...